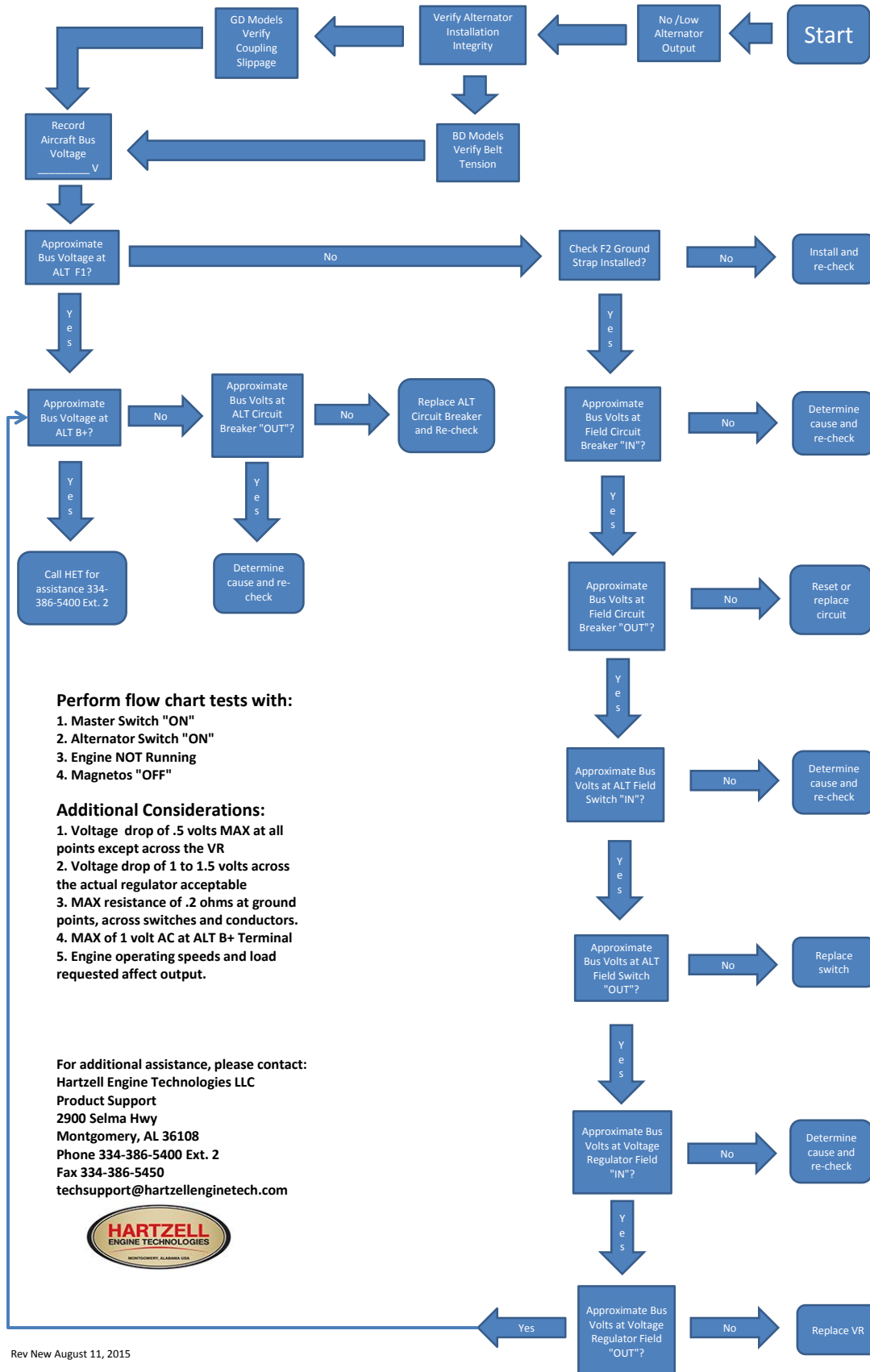


Troubleshooting Flow Chart for Externally Regulated Alternators



Perform flow chart tests with:

1. Master Switch "ON"
2. Alternator Switch "ON"
3. Engine NOT Running
4. Magnetos "OFF"

Additional Considerations:

1. Voltage drop of .5 volts MAX at all points except across the VR
2. Voltage drop of 1 to 1.5 volts across the actual regulator acceptable
3. MAX resistance of .2 ohms at ground points, across switches and conductors.
4. MAX of 1 volt AC at ALT B+ Terminal
5. Engine operating speeds and load requested affect output.

For additional assistance, please contact:

Hartzell Engine Technologies LLC
 Product Support
 2900 Selma Hwy
 Montgomery, AL 36108
 Phone 334-386-5400 Ext. 2
 Fax 334-386-5450
 techsupport@hartzellenginetech.com

